

Snowfall Mittens



Mittens are my favourite thing to knit in the fall because they seem like the perfect way to prepare for the winter. There's nothing like having warm mittens to slip your hands in when the snow begins to fly. These mittens were inspired by that first winter snow. The braid on the cuff helps the cuff to lie flat and the two colour fair isle pattern makes them thicker than a single colour mitten. This pattern was commissioned by Jessica Strong in the fall of 2009.

Yarn: Lamb's Pride Super Wash (100% Washable Wool, 200 yards per 100g skein) ½ skein of each
MC: #SW58 Navy Night
CC: #SW11 White Frost

Needles: 1 set 4mm double pointed needles

Gauge: 6 stitches x 7 rows is one inch.

Difficulty: Intermediate

General Pattern Notes: 1) Both strands of yarn are carried through-out the pattern. If the chart calls for more than 4 stitches in a row of the same colour then you will have to catch the float. You can do this by crossing the unused yarn over the working one and then knitting the next stitch as usual, this should "trap" the unused strand nicely. 2) When blocked the mittens will relax slightly.

Instructions

Braided Cuff

Row 1: CO 56 stitches in CC, knit round in CC.

Row 2: k1 in MC, k1 in CC.

Row 3: yf, *p1 in MC, cross CC over MC, p1 in CC, cross MC over CC* repeat * to * around.

Row 4: *p1 in MC, cross CC under MC, p1 in CC, cross MC under CC* repeat * to * around.

Body of Mitten

Row 5-25: Work in pattern (Note: don't miss the K2tog in the palm side!)

Row 26: Work the back of the hand as written. For the palm side: k1, *kfb, k1* repeat * to * six times, k remaining stitches.

Row 27-28: Work in pattern.

Row 29: Work the back of the hand as written. For the palm side: k1 MC, k1 in CC *kfb in MC, k1 in CC* repeat * to * four times, k remaining stitches.

Row 30: Work the back of the hand as written. For the palm side: k1, put the next 14 stitches on a stitch holder or scape yarn, cast on 7 stitches in MC, knit remaining stitches around

Row 32-58: Work in pattern.

Row 59: Begin decreasing on palm side, work as usual on back of hand.

Row 61: Begin decreasing on the back of the hand.

Row 62-71: Work in pattern, decreasing as indicated.

Snowfall Mittens

Break yarn and thread the tail through all remaining stitches, pull tail inside the mitten.

Thumb

Pick up the 14 stitches set aside on the stitch holder or waste yarn. With the second and third needle pick up 10 stitches around the edge of the thumb hole. Knit 13 rounds in thumb chart pattern. Start decreases: *k1 MC k2tog CC* repeat * to * around until 6 stitches remain. Break yarn and thread the tail through remaining stitches, pull tail inside the mitten.



Second Mitten Thumb Gusset

Instructions

When making the second mitten simply reverse the direction the chart is read. This is not strictly necessary for the back of the hand as the pattern is symmetrical. For the thumb gusset it may be trickier so I have written them out here.

Work the first 25 rows in as for the first one

Row 26: k20 *k1 kfb* repeat * to * six times k1

Row 27-28 Work in pattern

Row 29: k23 *k1 in CC kfb MC* repeat * to * four times

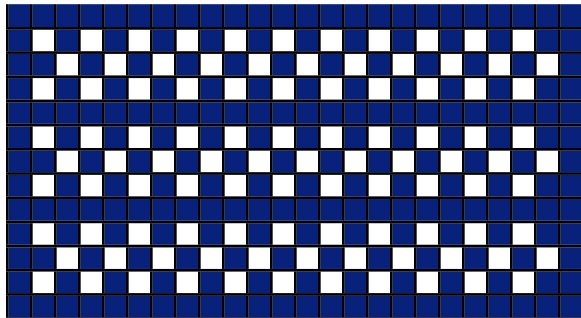
Row 30: k20 put 14 stitches on stitch holder, cast on 7 stitches, k1

Work the rest as for the first mitten.

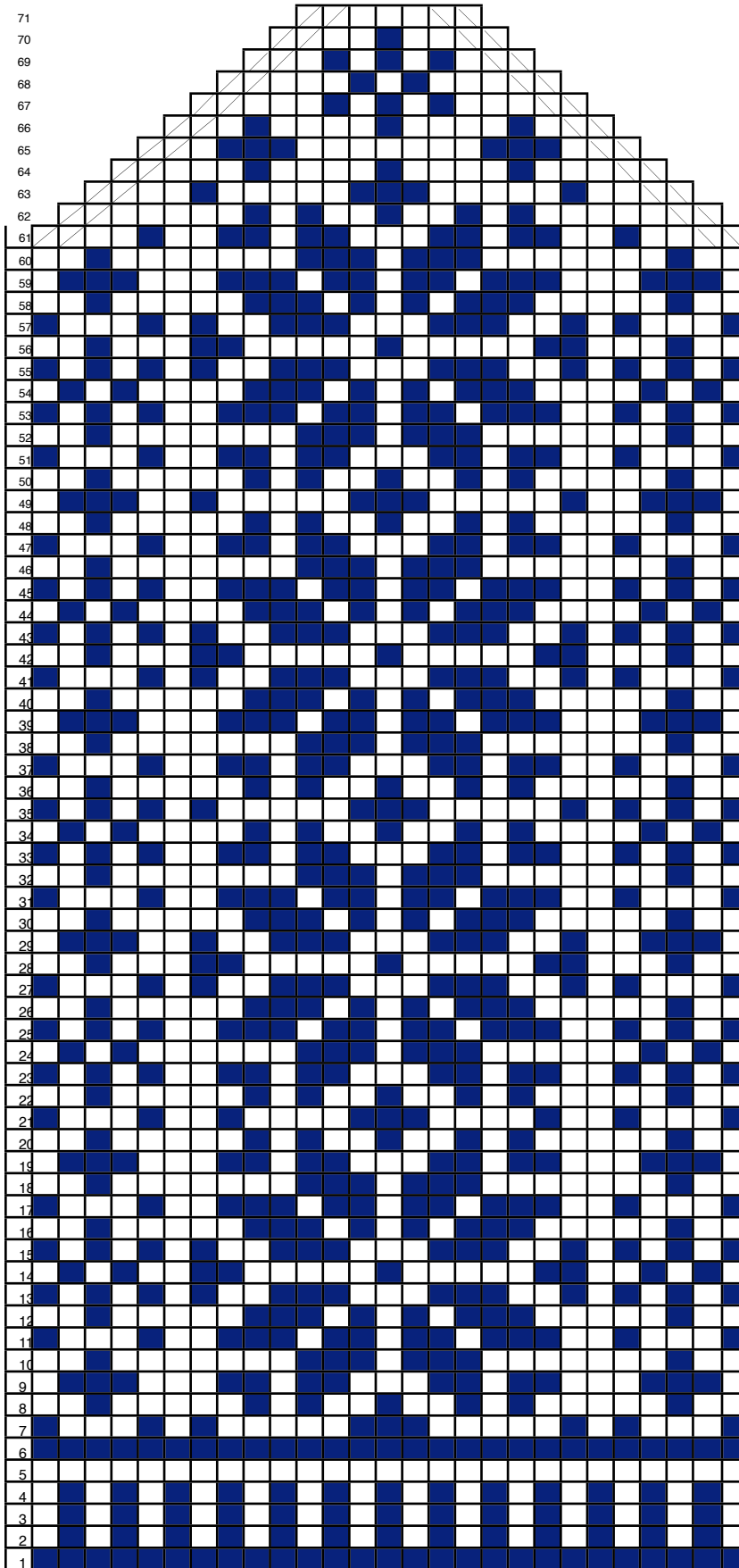
Finishing

Weave in all loose ends. Lightly block with cold water and dry flat. Make a second mitten being careful to reverse the thumb placement. Enjoy your Snowfall Mittens!

Thumb Chart



Snowfall Mittens
Back of the Hand Chart

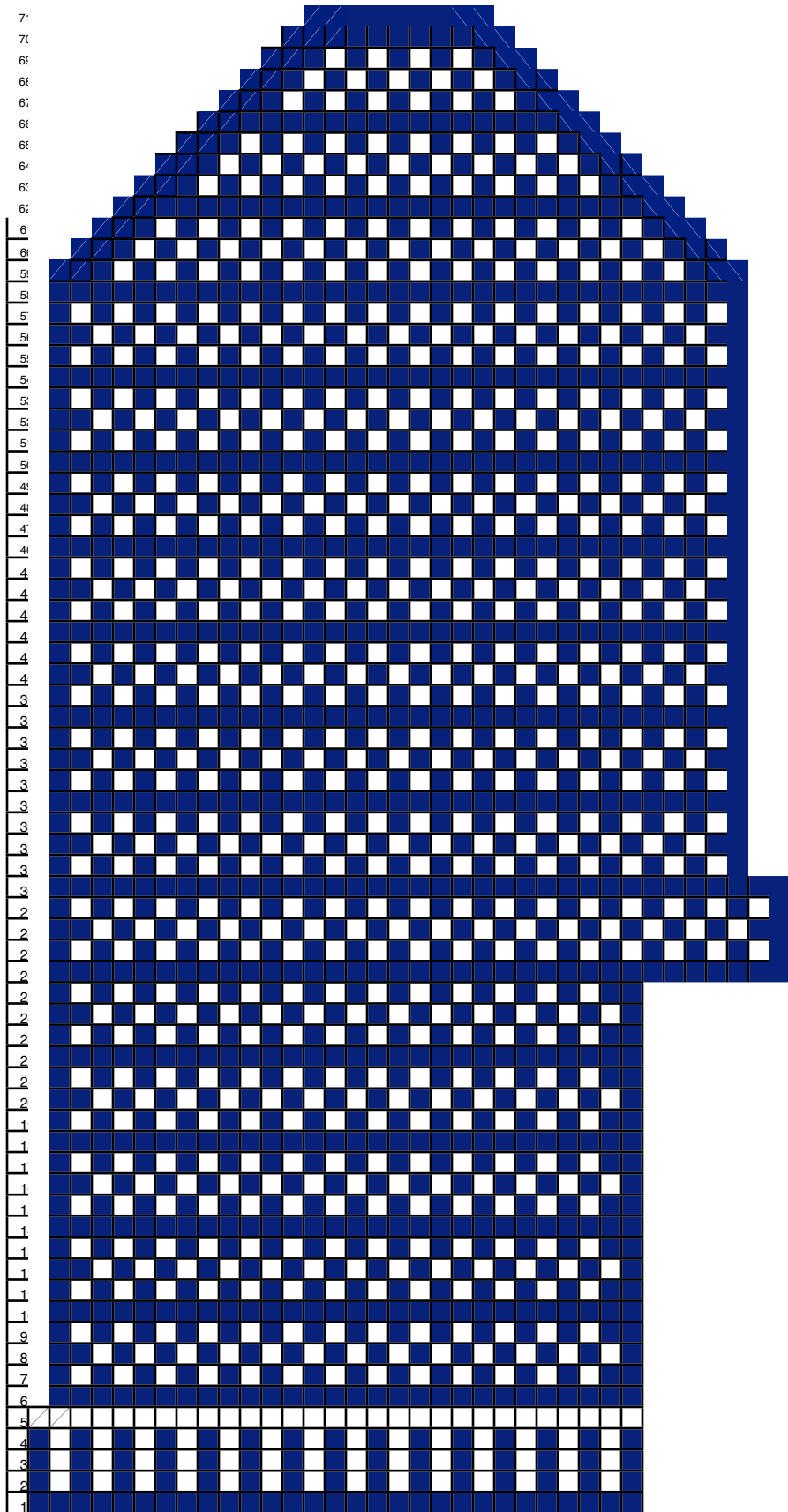


Legend

- Knit MC
- Knit CC
- SSK
- K2tog

Snowfall Mittens

Palm Side Chart



Legend

- Knit MC
- Knit CC
- ▤ SSK
- ▥ K2tog